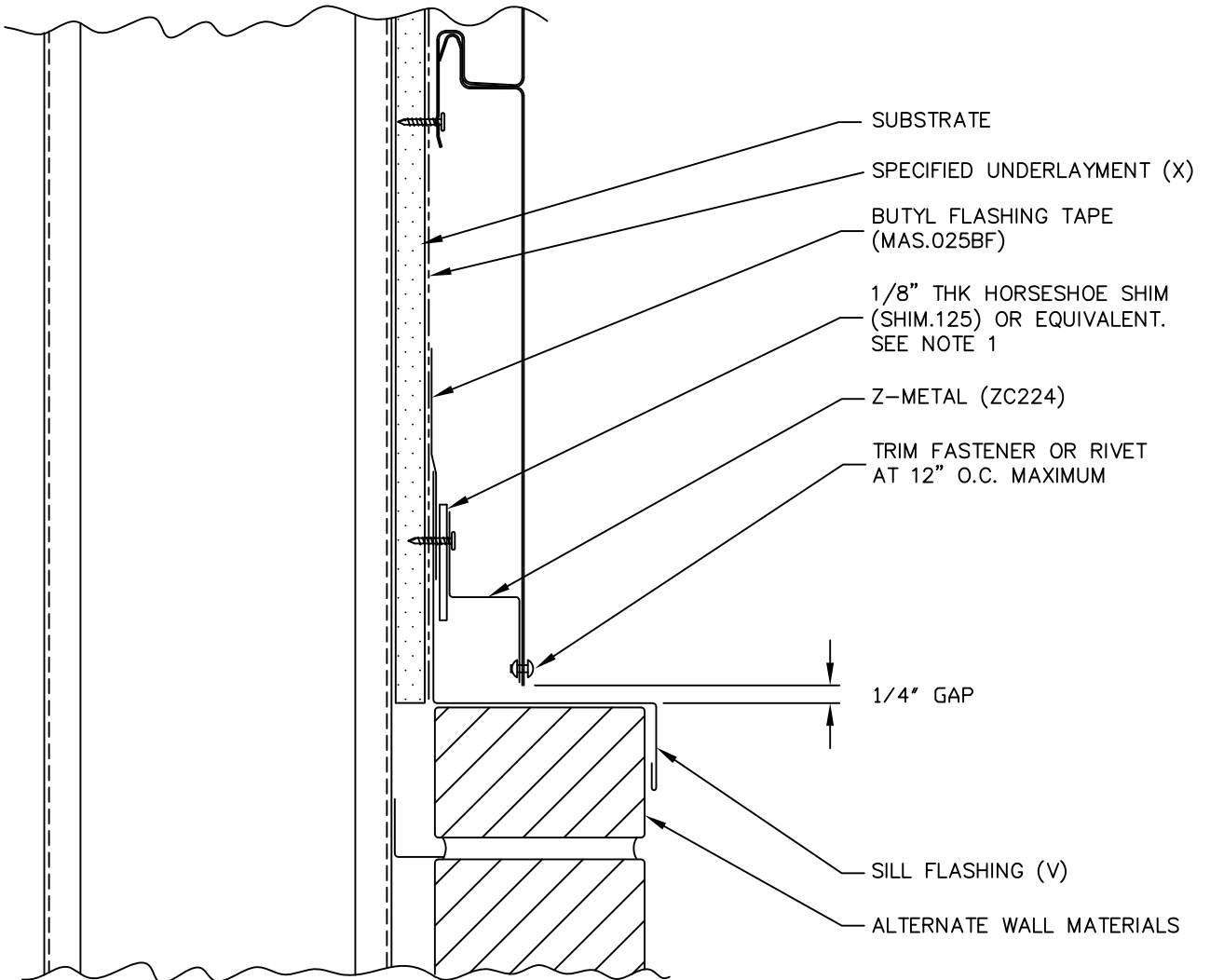


ZC224



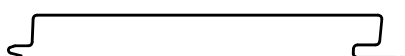
1. SHIM USED FOR MOISTURE CONTROL (DRAINAGE) IN FLUSH MOUNT APPLICATIONS.

(X) - NOT BY AEP SPAN

(V) - DIMENSIONS VARY BASED ON PROJECT CONDITIONS



PRESTIGE SERIES  
 HORIZONTAL INSTALL.



SILL

PSH-05