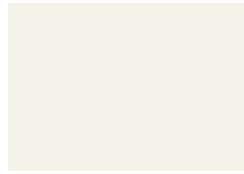


### DURA TECH™ 5000 - Premium 70% Fluoropolymer (PVDF) Coating



**ZINCALUME® Plus\***  
SRI: 65 • 24ga, 22ga & 20ga



**Cool Regal White**  
SRI: 88 • 24ga & 22ga



**Cool Parchment**  
SRI: 58 • 24ga & 22ga



**Cool Sierra Tan**  
SRI: 55 • 24ga & 22ga



**Cool Terra-Cotta**  
SRI: 41 • 24ga & 22ga



**Cool Red**  
SRI: 46 • 24ga & 22ga



**Cool Colonial Red**  
SRI: 35 • 24ga & 22ga



**Cool Old Town Gray**  
SRI: 43 • 24ga & 22ga



**Cool Zinc Gray**  
SRI: 39 • 24ga & 22ga



**Cool Weathered Copper**  
SRI: 34 • 24ga & 22ga



**Cool Dark Bronze**  
SRI: 32 • 24ga & 22ga



**Cool Matte Black**  
SRI: 29 • 24ga & 22ga



**Cool Tahoe Blue**  
SRI: 33 • 24ga & 22ga



**Cool Regal Blue**  
SRI: 29 • 24ga & 22ga



**Cool Marine Green**  
SRI: 47 • 24ga & 22ga



**Cool Hemlock Green**  
SRI: 35 • 24ga & 22ga



**Cool Jade Green**  
SRI: 29 • 24ga & 22ga



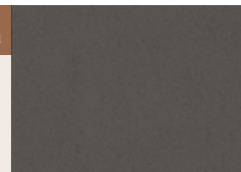
**Cool Leaf Green**  
SRI: 30 • 24ga & 22ga



**Cool Forest Green**  
SRI: 29 • 24ga & 22ga

### Vintage® - Premium Finish (Subject to up-charge) SRI: 22 • 24ga

Vintage coated metal is an innovative coating process over a TruZinc® G90 metallic coated steel surface producing a beautiful, durable, aged-metallic finish.



Dura Tech™ coatings combine the corrosion protection of a ZINCALUME® substrate with a highly durable resin formulation and cool pigment technology to provide excellent color retention and reduces the demand for energy.



### DURA TECH™ mx - Premium Fluoropolymer (PVDF) Pearlescent Coating (Subject to up-charge)



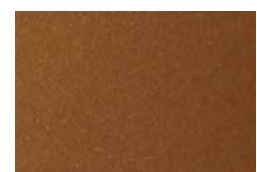
**Cool Metallic Silver**  
SRI: 65 • 24ga & 22ga



**Cool ZACTique® II**  
SRI: 39 • 24ga & 22ga



**Cool Metallic Champagne**  
SRI: 54 • 24ga & 22ga



**Cool Metallic Copper**  
SRI: 53 • 24ga & 22ga

SRI=Solar Reflective Index. SRI values in accordance with ASTM E1980 and are based on independent testing. Cool Roof Rating Council (CRRG) performance values (for CA Title 24, Energy Star) are based on color families and will differ from those listed above. Please visit [www.aepspan.com](http://www.aepspan.com) for additional information. \*Clear acrylic coated



## KYNAR 500® OR HYLAR 5000® COLOR FINISHES – Provides excellent resistance to weathering and aging for maximum exterior durability.

	ASTM <sup>1</sup>	PERFORMANCE
Standard Film Thickness	D5796	0.15 - 0.25 mil primer, 0.70 - 0.80 mil top coat 0.50 mil backer coat (Polyester system applied over a primer)
Marine Environment Film Thickness	D5796	0.70 - 0.80 mil primer, 0.70 - 0.80 mil topcoat, 0.40 - 0.05 mil clear coat
Other unusual environmental conditions or specialized pigmentation may have different primer and clear coat requirements.		
Specular Gloss	D523	8-15% at 60° (Dura Tech 5000) 15-25% at 60° (Dura Tech mx)
Pencil Hardness	D3363	F-2H
Flexibility T-Bend	D4145	2T No loss of adhesion or evidence of cracking <sup>2</sup>
Cross Hatch Adhesion	D3359	No adhesion loss
Reverse Impact	D2794	No cracking or loss of adhesion
Abrasion, Falling Sand	D968	65 liters minimum
Flame Test	E84	Class A coating
Acid Pollutants 20% Sulfuric Acid, 18hrs. 10% Muriatic Acid, 24hrs.	D1308	No bleaching No color change, no blistering
Acid Rain Test	Kesternich	15 cycles minimum
Alkali Resistance	Kesternich	No effect
Salt Spray Resistance	B117	Passes 1,000 hours, coated steel <sup>2</sup>
Cyclic Salt Fog	B5894	2,000 hours passes adhesion
Humidity Resistance @ 100°	B2247	Passes 2,000 hours, coated steel <sup>2</sup>
South Florida Exposure	D2244	<5 NBS units change
UVB	D822	Passes 3,000 hours
Chalk Resistance	D4214	Rating of 8 minimum
ZINCALUME® and Galvalume® substrate	A792	55% aluminum-zinc alloy coated steel with a metallic coating weight of AZ50

### FINISH WARRANTIES

Limited warranties for chalk, fade and film integrity are available in durations of up to 30 years for both Dura Tech™ 5000 and Dura Tech™ mx. All AEP Span panels are offered with a corrosion warranty on Galvalume® or ZINCALUME® substrate. Terms can be affected by factors such as environment and building use. Vintage warranty varies. Inquire for details.

### COMPOSITION & APPLICATION:

Dura Tech™ 5000/mx coatings are factory applied, oven cured formulas applied by approved coil coaters. They utilize Kynar 500® or Hylar 5000® PVDF resins and inorganic, IR reflective pigments for superior long-term performance. Vintage specifications vary slightly. Contact an AEP Span representative for Vintage details.

### PRETREATMENT

All substrates are pre-treated in accordance with paint manufacturer's instructions. The pretreatment is to provide a suitable surface for application of the recommended primer.

<sup>1</sup> All tests performed to the latest ASTM revision. The test results set forth are representative of the results obtained by the paint manufacturer.

<sup>2</sup> Performances on HDG G90, ZINCALUME®, Galvalume®.

**Color swatches are for reference only and are limited by printing process and viewing conditions.** With metallic coatings, minor differences in both color and appearance are normal and to be expected. It is virtually impossible to match one metallic coating to another. Due to the coil application process, striations and longitudinal patterning may also show on these products. To minimize the possible visual effects of the normal minor differences in paint and its application, an entire job should be painted at one time. Additionally, fabricated panels, flat sheets, and flashings should be orientated in the same direction for installation.

**Contact AEP Span representative for actual color samples prior to purchase.**