



**Prestige Series®**  
(Vertical Install.)  
Installation Guide

# Prestige Series®

## (Vertical Install.) Installation Guide

### - Table of Contents -

<b>Section</b>	<b>Page</b>
<i>General Notes</i> . . . . .	<i>i</i>
<i>Panel Details</i> . . . . .	<i>1</i>
<i>Clip</i> . . . . .	<i>2</i>
<i>Closures</i> . . . . .	<i>3</i>
<i>Base</i> . . . . .	<i>4</i>
<i>Sill</i> . . . . .	<i>5</i>
<i>End Wall</i> . . . . .	<i>6</i>
<i>Outside Corner</i> . . . . .	<i>7</i>
<i>Inside Corner</i> . . . . .	<i>8</i>
<i>Soffit (Front)</i> . . . . .	<i>9</i>
<i>Soffit (Back)</i> . . . . .	<i>10</i>
<i>Soffit End Splice</i> . . . . .	<i>11</i>
<i>End Splice (w/Trim)</i> . . . . .	<i>12</i>
<i>Parapet</i> . . . . .	<i>13</i>
<i>Door/Window (Head)</i> . . . . .	<i>14</i>
<i>Door/Window (Jamb)</i> . . . . .	<i>15</i>
<i>Door/Window (Sill)</i> . . . . .	<i>16</i>
<i>Wall Penetration (3D)</i> . . . . .	<i>17</i>
<i>Wall Penetration</i> . . . . .	<i>18</i>
<i>Rigid Insulation</i> . . . . .	<i>19</i>

## General Notes

The attached installation details are intended to be a design aid and do not depict all situations. Modifications are the responsibility of the designer/user and should take into account climate conditions such as wind and snow, governing code requirements, and the actual usage and maintenance of the structure.

### Applications:

Prestige Series is designed to be used as a soffit panel, or as a wall panel installed in the vertical or horizontal orientation. It shall not be utilized for roof applications. Prestige Series can be used over solid substrates or over spaced supports. This installation guide depicts panels installed over solid substrate. Details for panels installed over spaced supports would be similar.

### Flashings:

Where possible, flashings should be lapped away from prevailing winds. Certain flashings should be supported if it is likely that equipment (ladder, etc.) will be used against them. Check with AEP Span any time you intend to specify a prefinished flashing in a gauge or finish different than with Prestige Series. It is good practice to specify that all flashings be of the same material (gauge, color, finish) as the roof panels to ensure long-term durability. Field-painted flashings rarely equal the durability and colorfastness of factory baked-on paint systems. The enclosed details have minimized the use of exposed fasteners where possible. The edges of flashings have also been shown hemmed to strengthen and to minimize the exposure of cut edges.

Flashing design and fabrication is generally the responsibility of the contractor. For convenience, we have provided some typical flashing drawings on our website at <http://www.aepspan.com/roof/prodDetailad08.html?id=35>. Applicable Prestige Series flashing part numbers are referenced within this installation guide. Note that flashing shapes and dimensions may vary greatly based on project requirements. Installation details and flashings referenced within are for general design guidance only.

### Condensation, Insulation, & Ventilation:

It is the designer's responsibility to determine the need and composition of condensation control materials including insulation and vapor retarders, as well as ventilation requirements. Metal wall products are susceptible to condensation and its control should be carefully considered.

### Thermal Movement:

Both panels and flashings must allow for thermal movement (expansion and contraction) of the materials, especially where long lengths are used. Appropriate gaps or other provisions must be provided to accommodate thermal movement.

### Oil Canning:

Flat metal surfaces often display waviness commonly referred to as 'oil canning'. This can be caused by variations in raw material, processing variations, product handling, or variations in the installation substrate. Oil canning is a characteristic, not a defect, of panels manufactured from light-gauge metal. To reduce potential for oil canning, substrates should not deviate from a flat plane more than 1/4 inch in 20 feet, or 1/8 inch in 5 feet. Oil canning is not a cause for panel rejection. Additional technical information is available upon request.

### References:

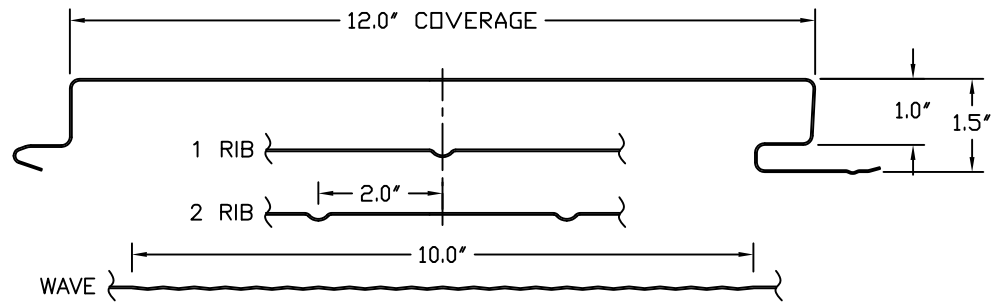
The Sheet Metal and Air Conditioning Contractors' National Association Inc. (SMACNA) manual is an excellent reference for sheet metal contractors. It's guidelines for underlayments, gutter and downspout size requirements, and expansion/contraction of metals and flashing joints should be followed.

### Technical Assistance:

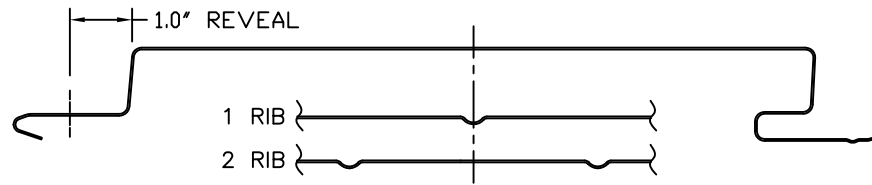
Contact your AEP Span Sales Representative for additional information.



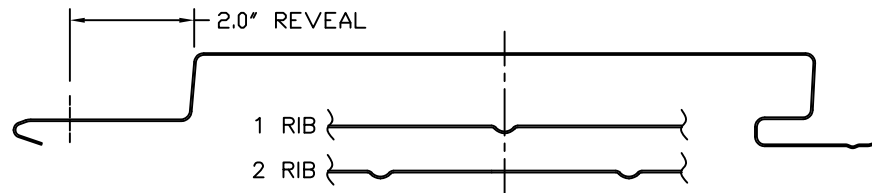
NO REVEAL



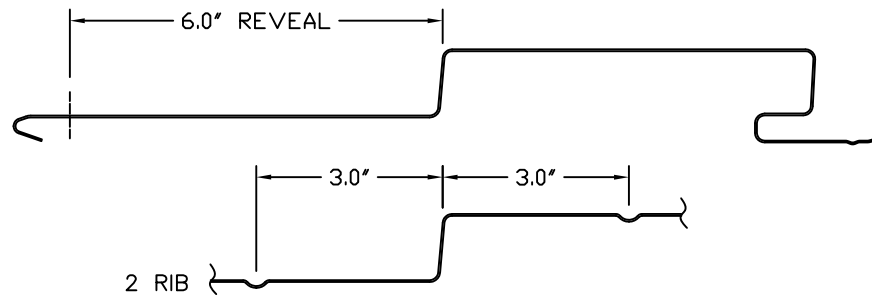
1" REVEAL



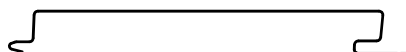
2" REVEAL



6" REVEAL

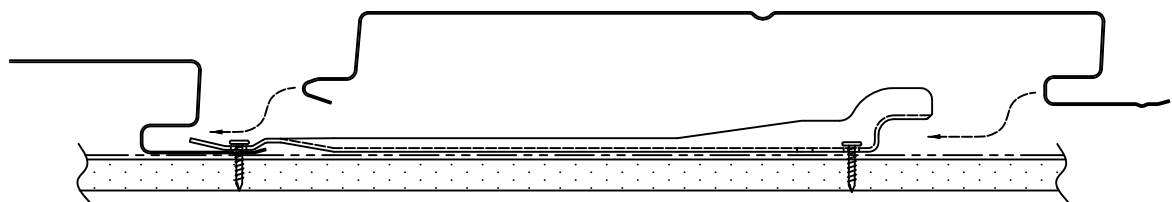
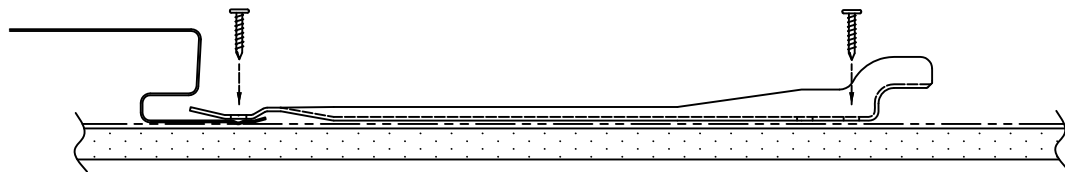
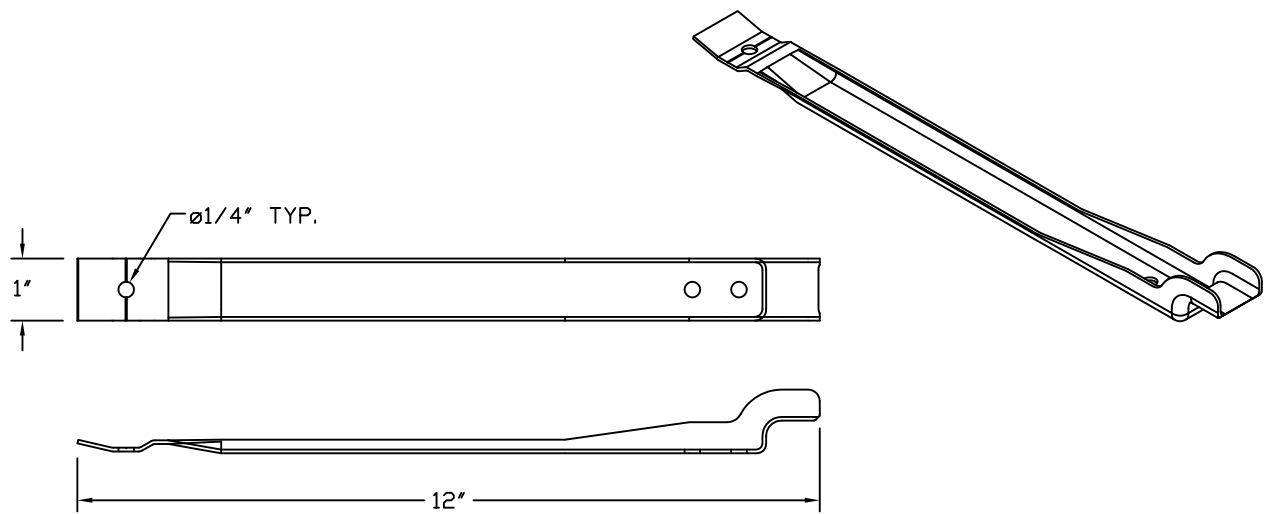


**PRESTIGE SERIES**  
VERTICAL INSTALL.



PANEL DETAILS

PSV-01

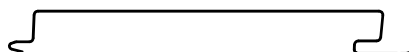


**NOTES:**

- CLIP REQUIRED FOR MOST WIND LOAD CONDITIONS.
- REFER TO PANEL ATTACHMENT SCHEDULES FOR PROPER CLIP/FASTENER SPACING & ASSOCIATED WIND LOAD CAPACITIES.
- REFER TO AEP SPAN TECHNICAL BULLETIN #35 FOR ADDITIONAL INFORMATION REGARDING CLIP USAGE.

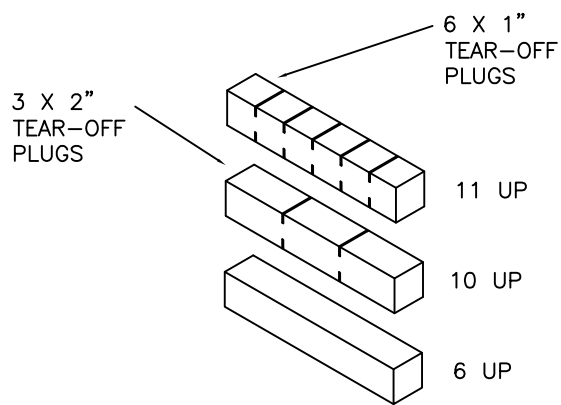


**PRESTIGE SERIES  
VERTICAL INSTALL.**

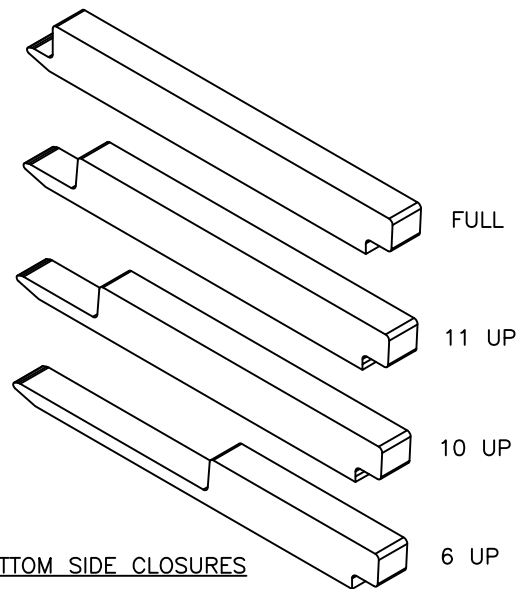


**CLIP**

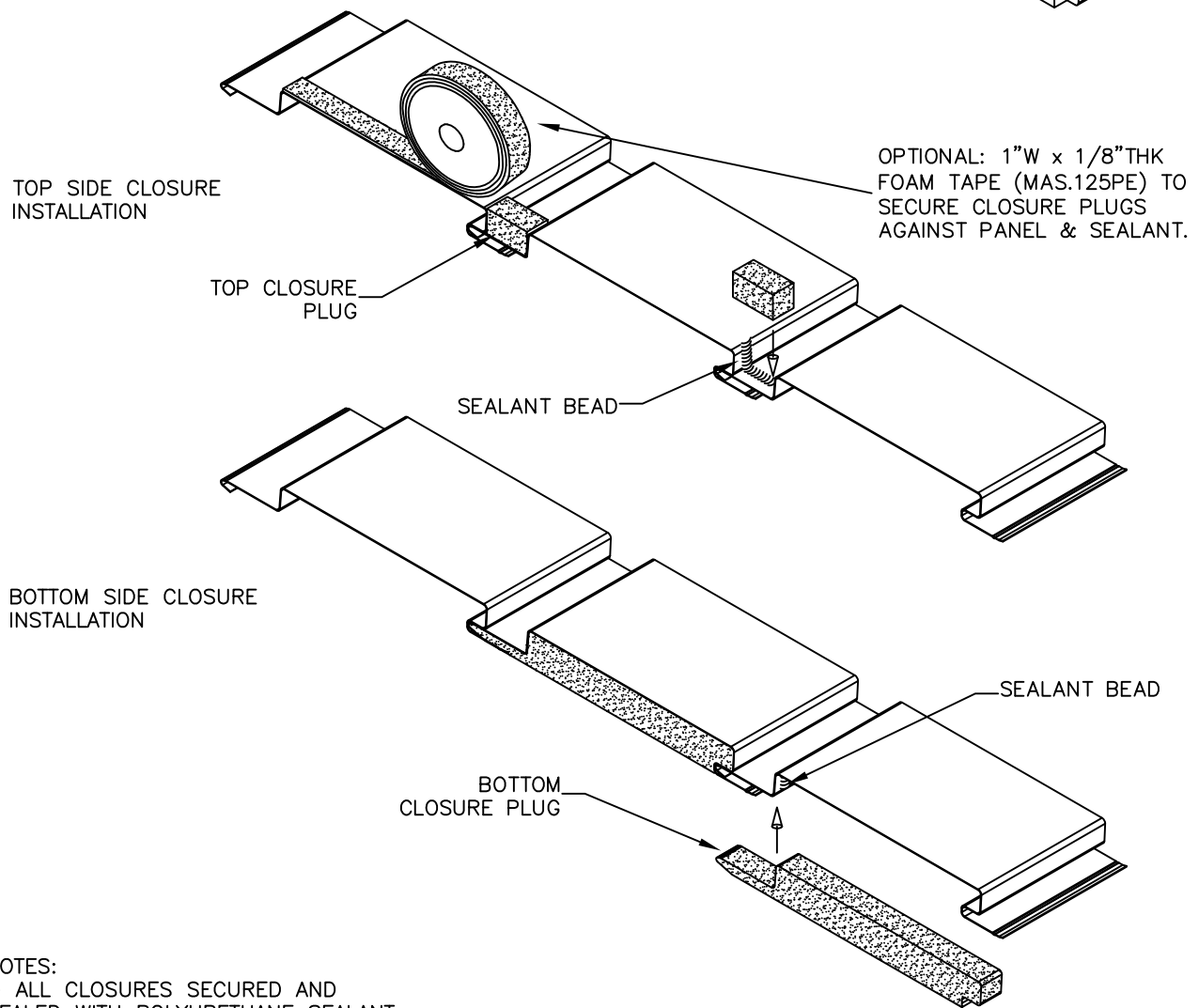
**PSV-02**



TOP SIDE CLOSURES



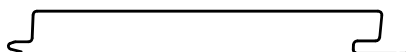
BOTTOM SIDE CLOSURES



NOTES:  
 - ALL CLOSURES SECURED AND SEALED WITH POLYURETHANE SEALANT

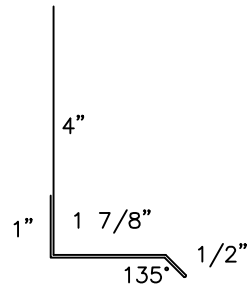


**PRESTIGE SERIES**  
 VERTICAL INSTALL.

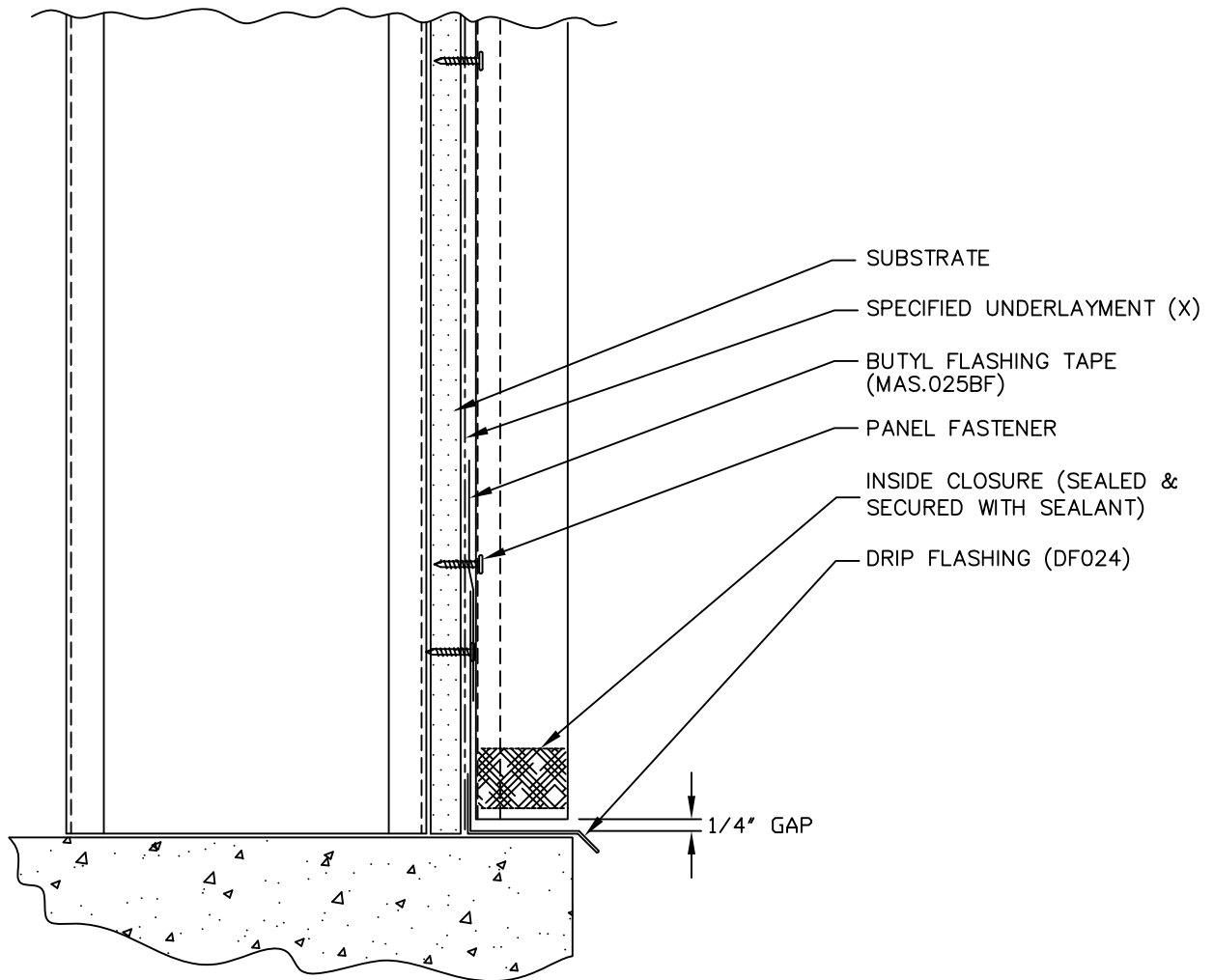


**CLOSURES**

**PSV-03**



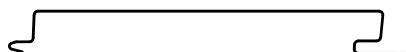
DF024



(X) – NOT BY AEP SPAN

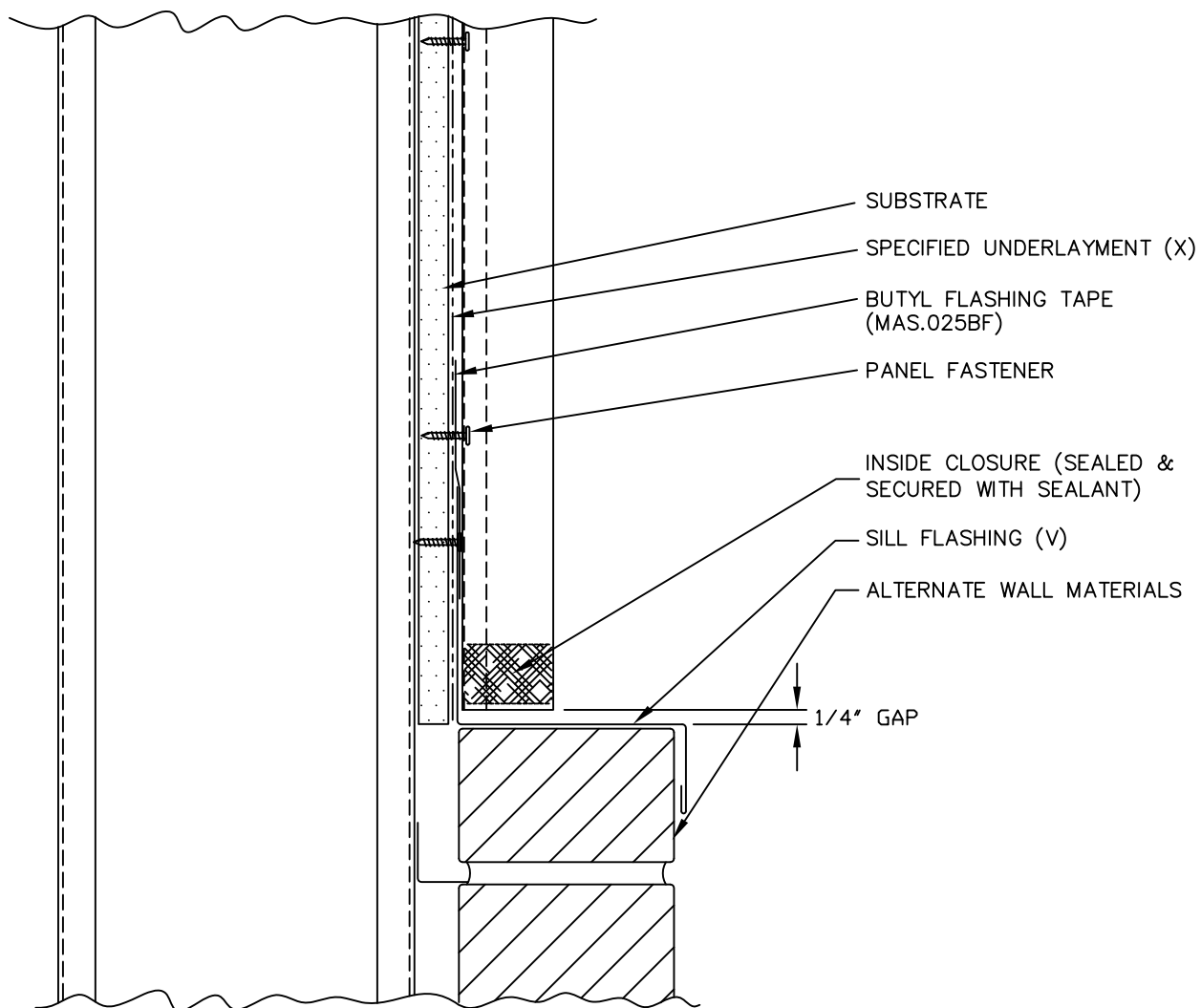


PRESTIGE SERIES  
VERTICAL INSTALL.



BASE

PSV-04

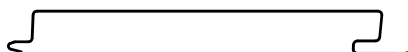


(X) - NOT BY AEP SPAN

(V) - DIMENSIONS VARY BASED ON PROJECT CONDITIONS



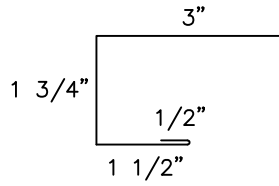
## PRESTIGE SERIES VERTICAL INSTALL.



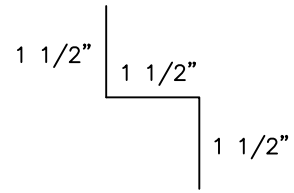
SILL

PSV-05

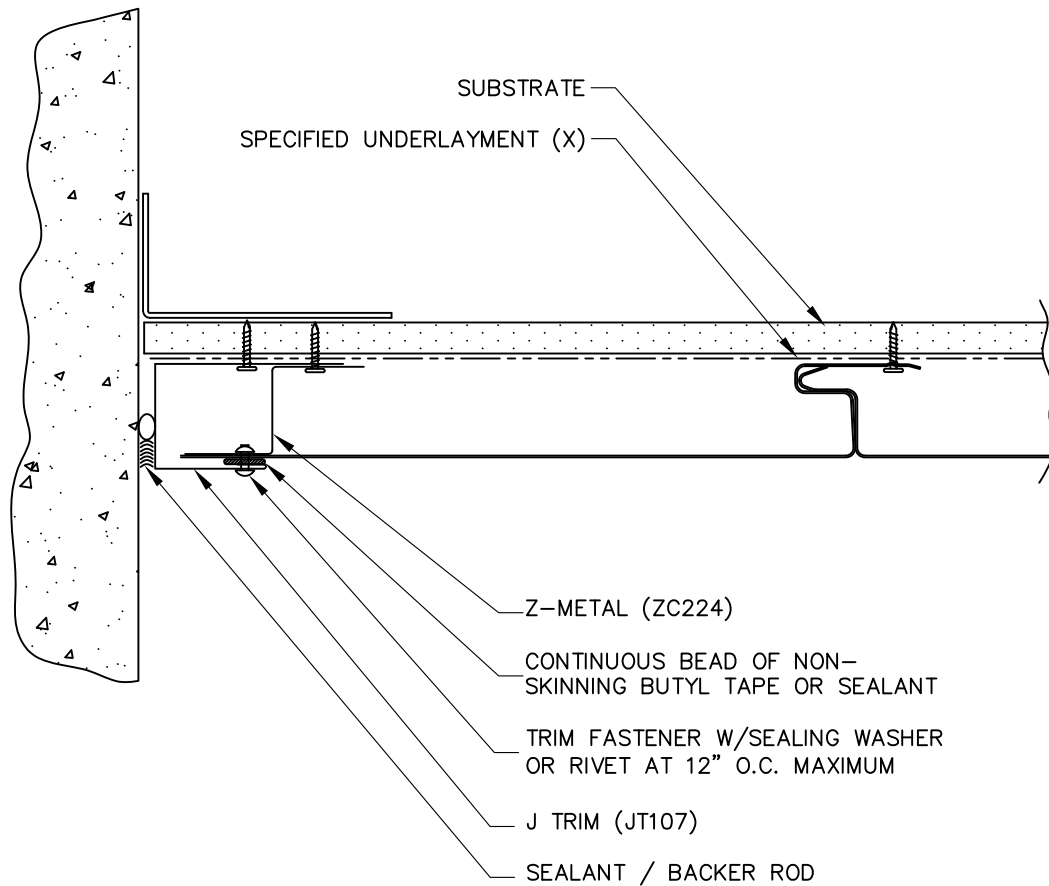




JT107



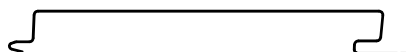
ZC224



(X) – NOT BY AEP SPAN

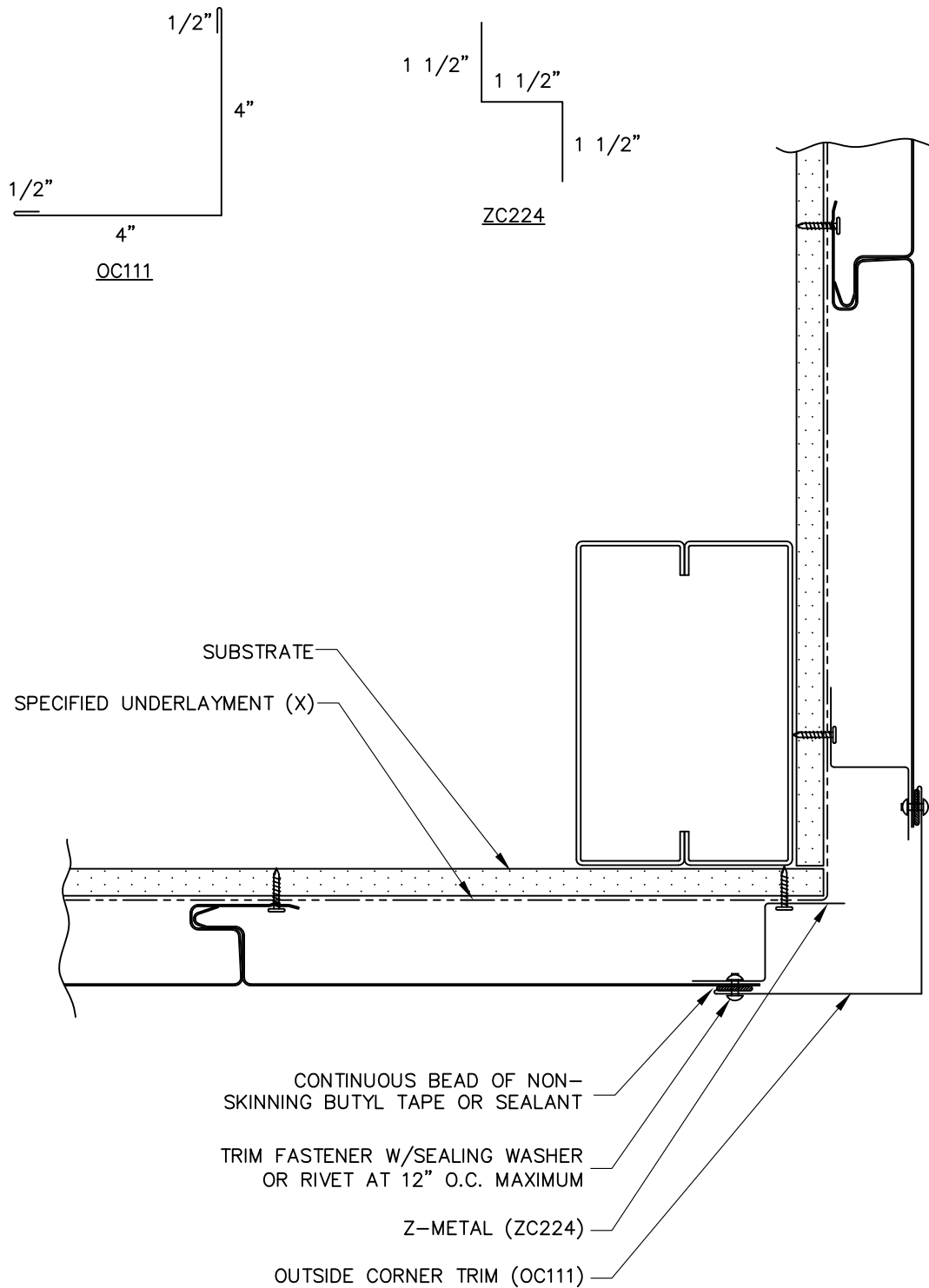


PRESTIGE SERIES  
VERTICAL INSTALL.



END WALL

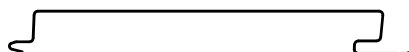
PSV-06



(X) - NOT BY AEP SPAN

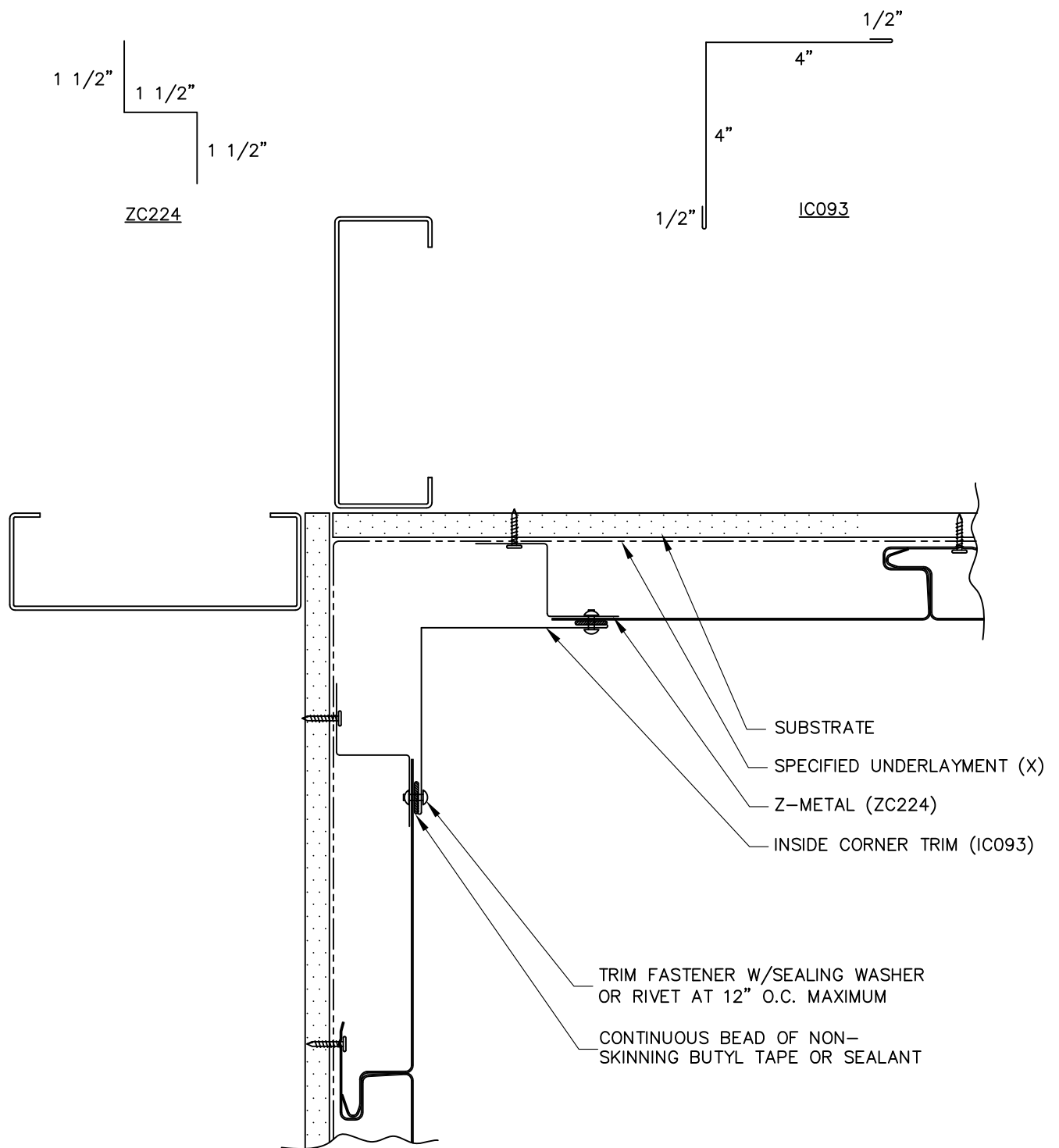


**PRESTIGE SERIES**  
VERTICAL INSTALL.



**OUTSIDE CORNER**

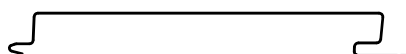
**PSV-07**



(X) – NOT BY AEP SPAN

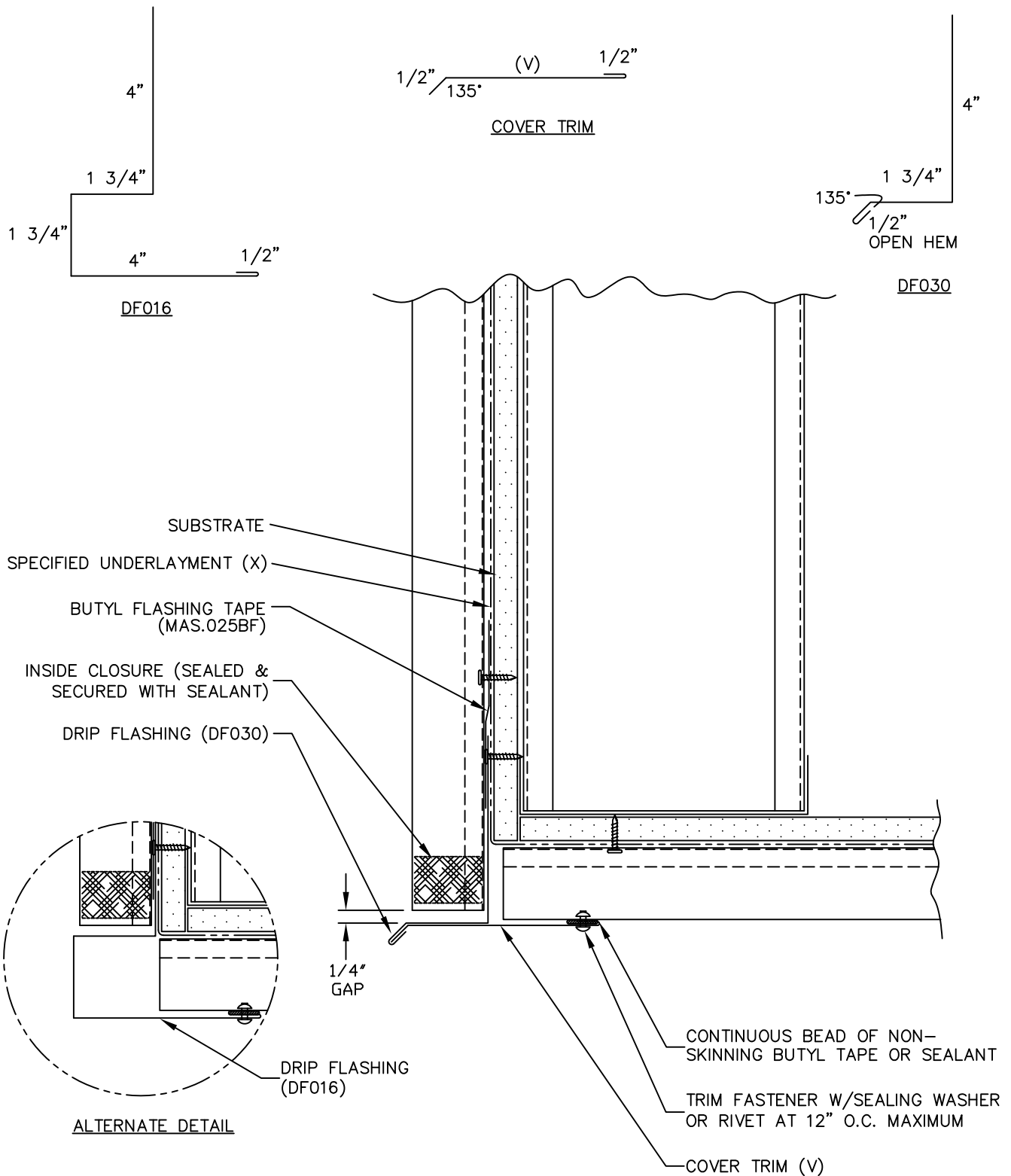


PRESTIGE SERIES  
VERTICAL INSTALL.



INSIDE CORNER

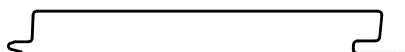
PSV-08



(X) - NOT BY AEP SPAN  
(V) - DIMENSIONS VARY BASED ON PROJECT CONDITIONS

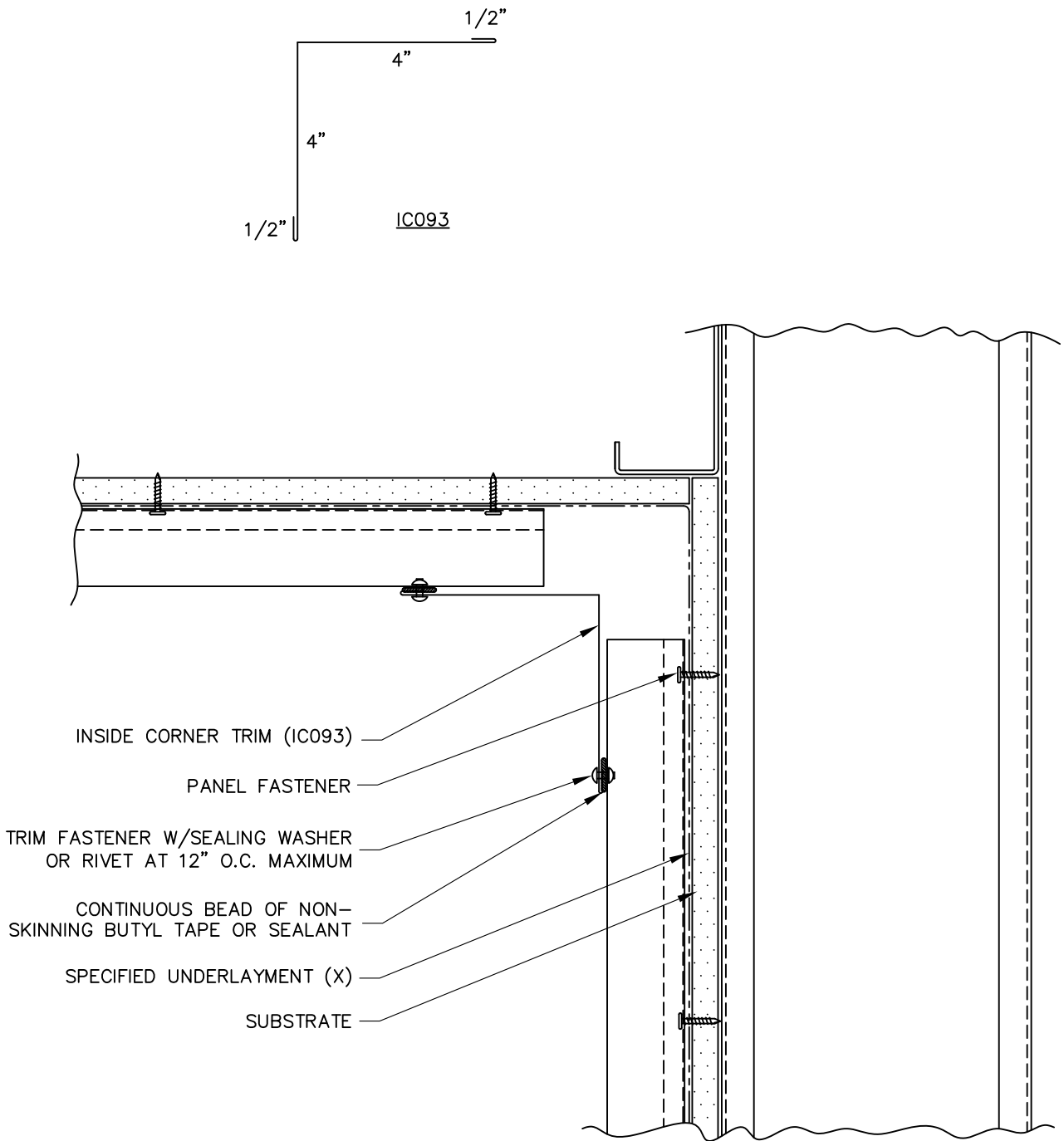


## PRESTIGE SERIES VERTICAL INSTALL.



SOFFIT (FRONT)

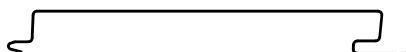
PSV-09



(X) – NOT BY AEP SPAN

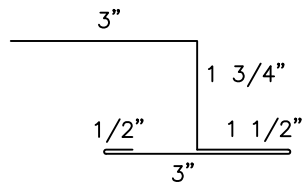


## PRESTIGE SERIES VERTICAL INSTALL.

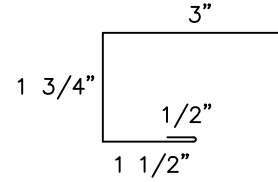


SOFFIT (BACK)

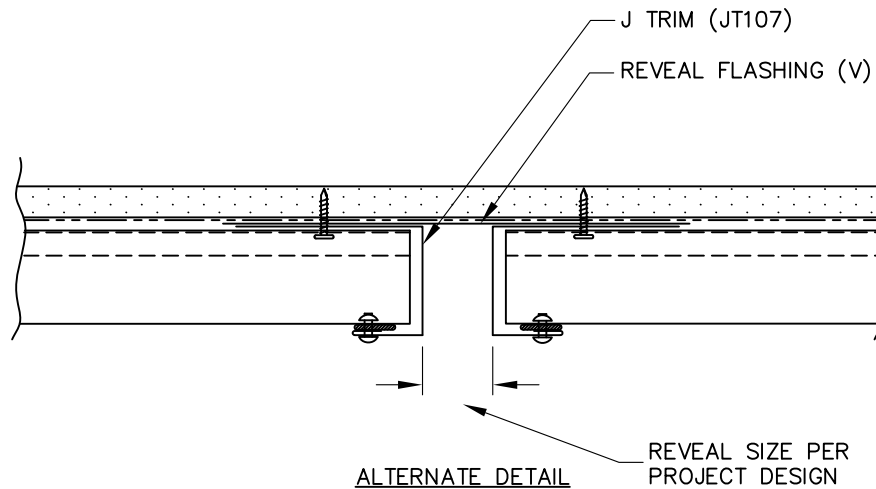
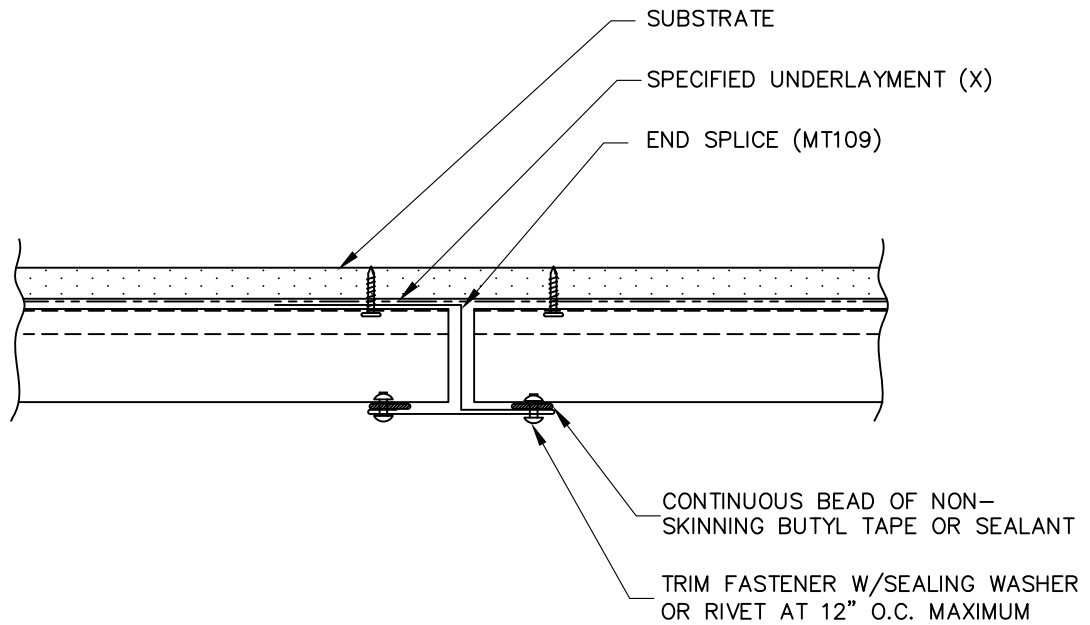
PSV-10



MT109



JT107

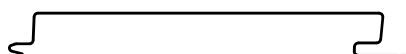


(X) - NOT BY AEP SPAN

(V) - DIMENSIONS VARY BASED ON PROJECT CONDITIONS

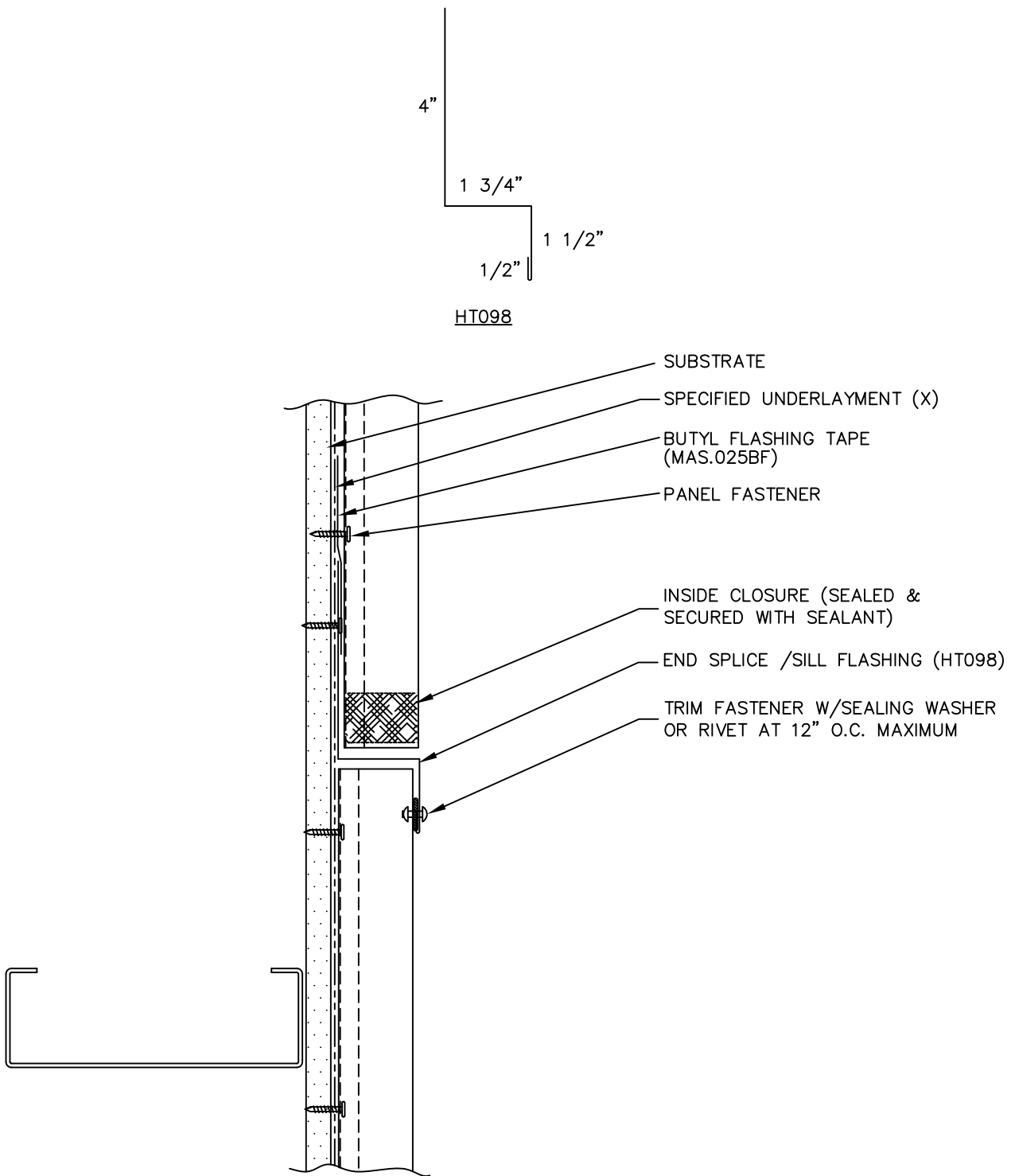


PRESTIGE SERIES  
VERTICAL INSTALL.



SOFFIT END SPLICE

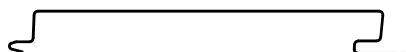
PSV-11



(X) – NOT BY AEP SPAN



**PRESTIGE SERIES**  
VERTICAL INSTALL.

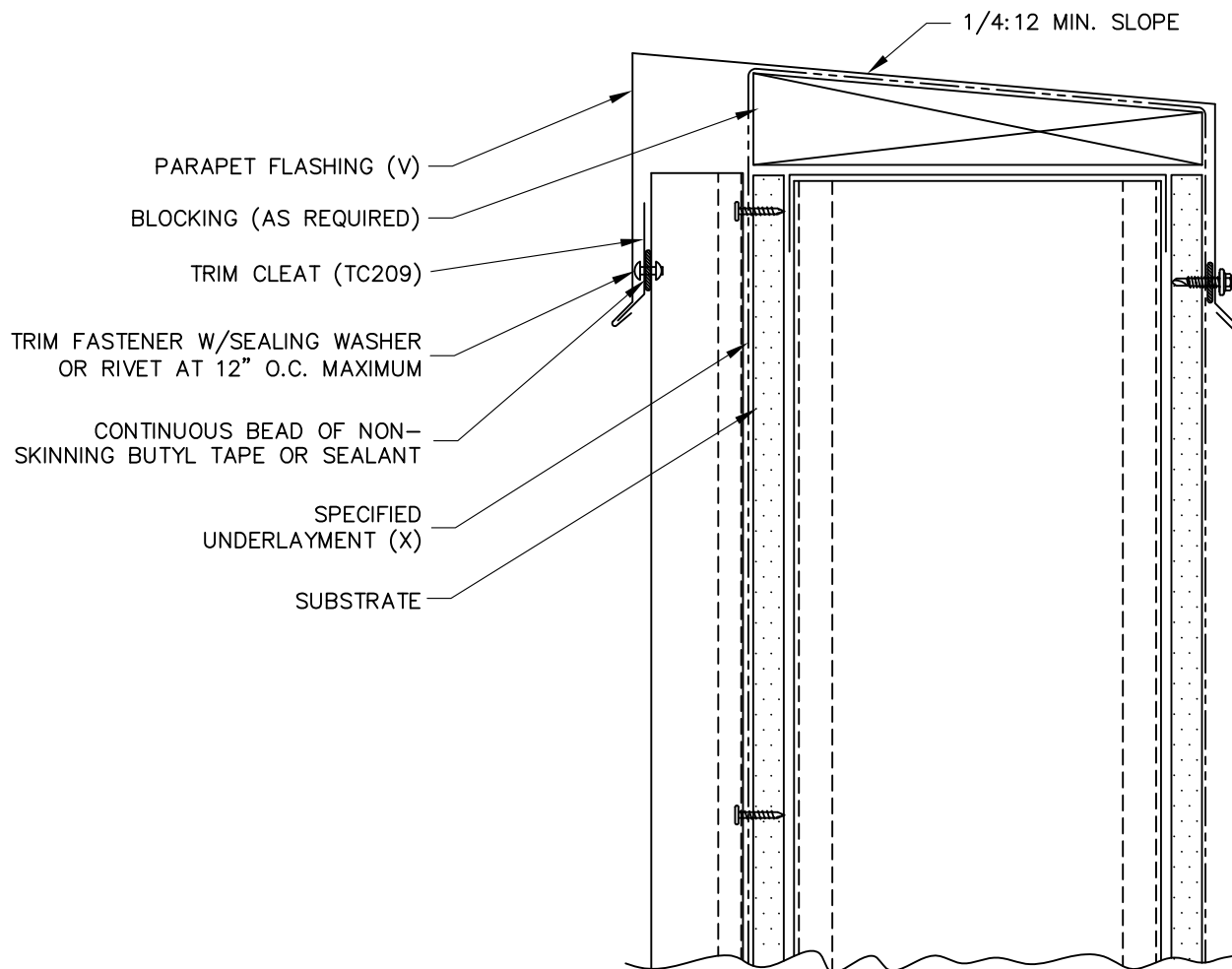


END SPLICE (W/TRIM)

PSV-12

1 1/2"  
135°  
5/8"

TC209

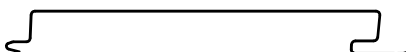


(X) - NOT BY AEP SPAN

(V) - DIMENSIONS VARY BASED ON PROJECT CONDITIONS



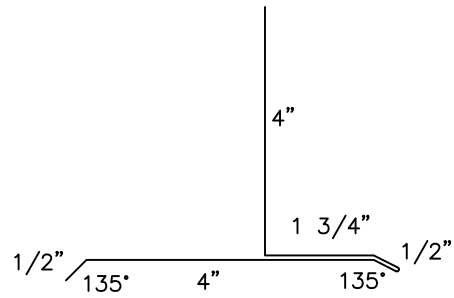
PRESTIGE SERIES  
VERTICAL INSTALL.



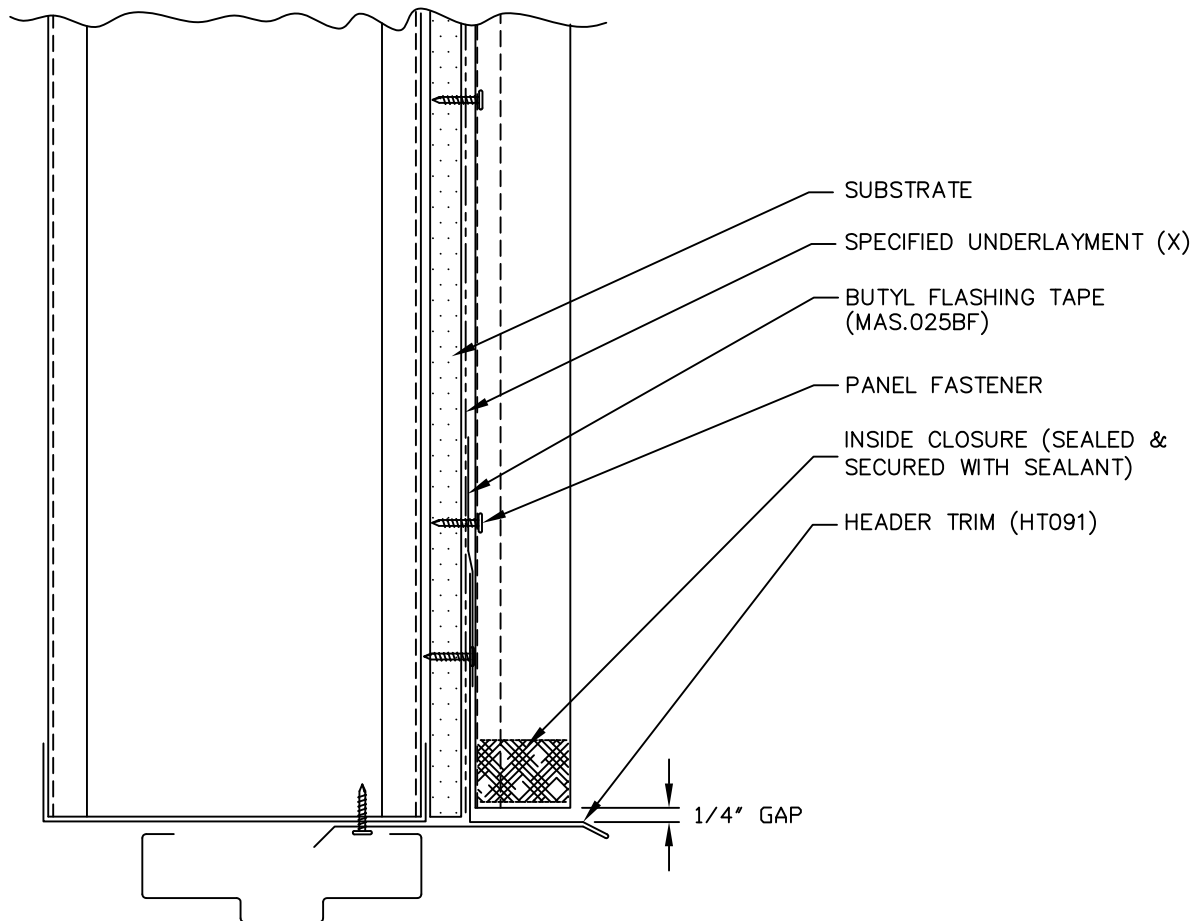
PARAPET

PSV-13





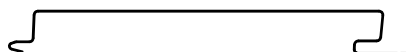
HT091



(X) – NOT BY AEP SPAN

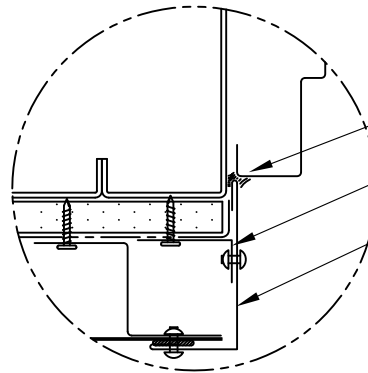
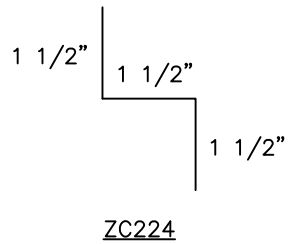
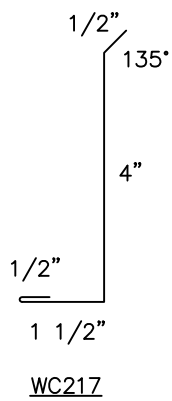


PRESTIGE SERIES  
VERTICAL INSTALL.



DOOR / WINDOW  
(HEAD)

PSV-14

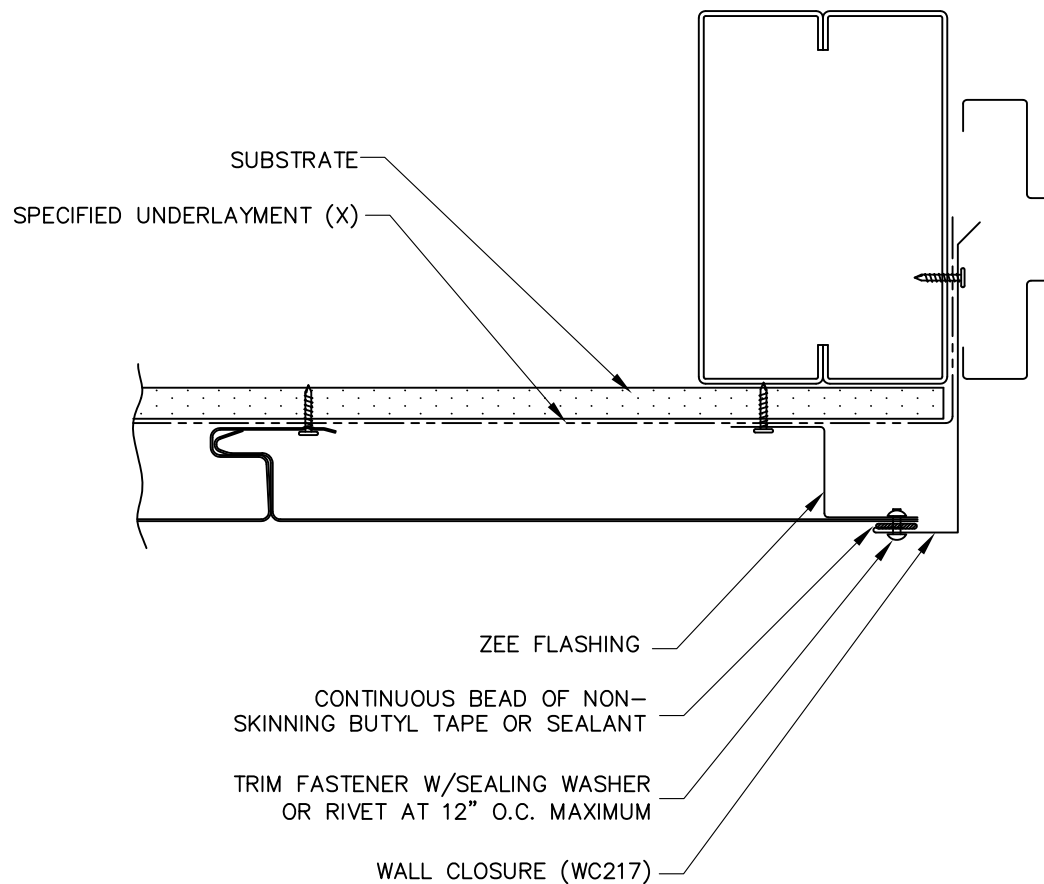


SEALANT

TRIM ANGLE

WALL CLOSURE

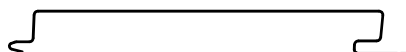
ALTERNATE DETAIL



(X) - NOT BY AEP SPAN

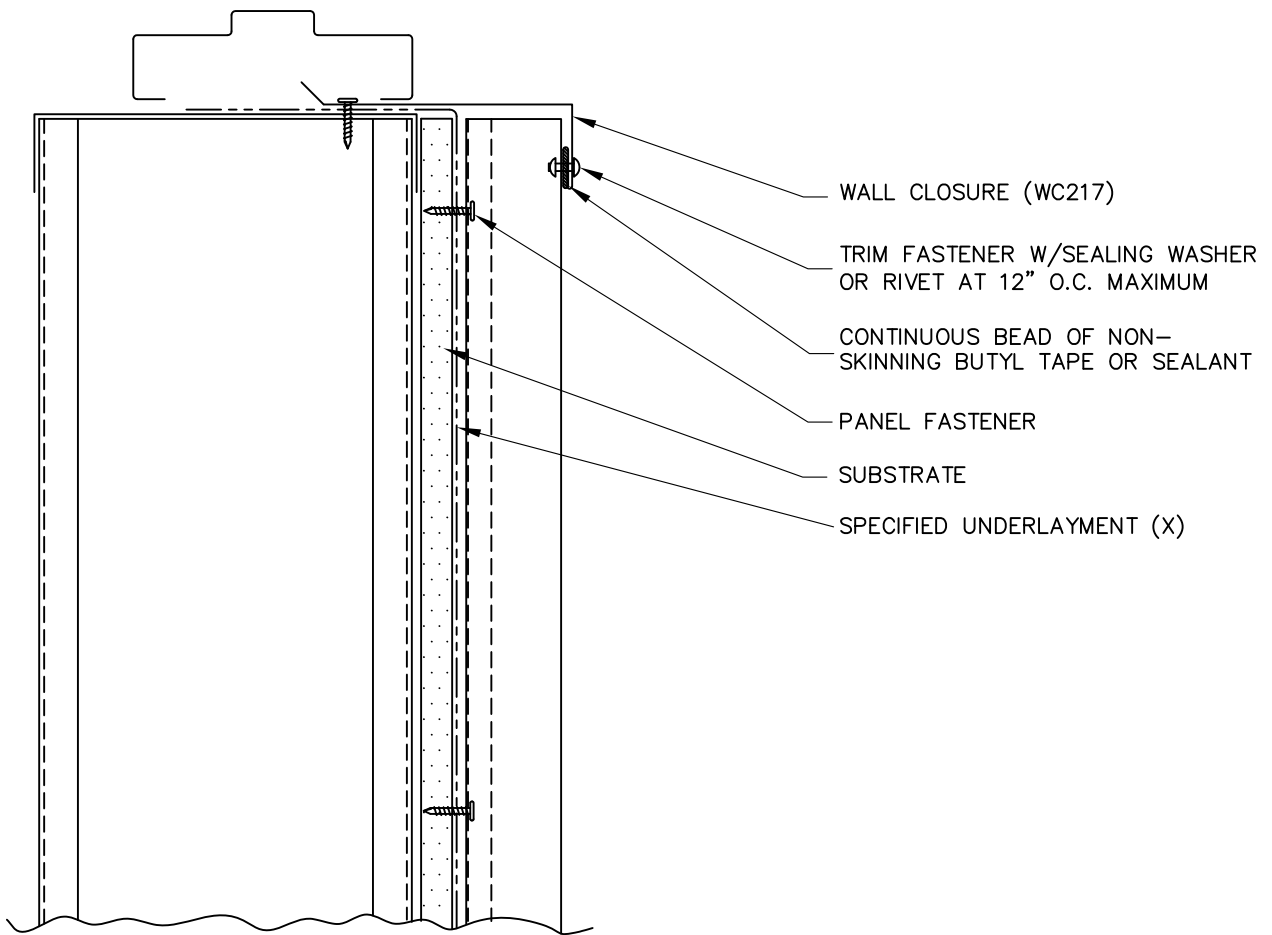
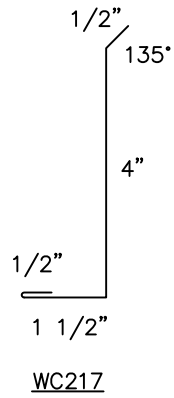


**PRESTIGE SERIES**  
VERTICAL INSTALL.



**DOOR / WINDOW**  
(JAMB)

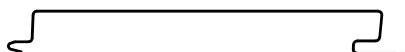
**PSV-15**



(X) – NOT BY AEP SPAN

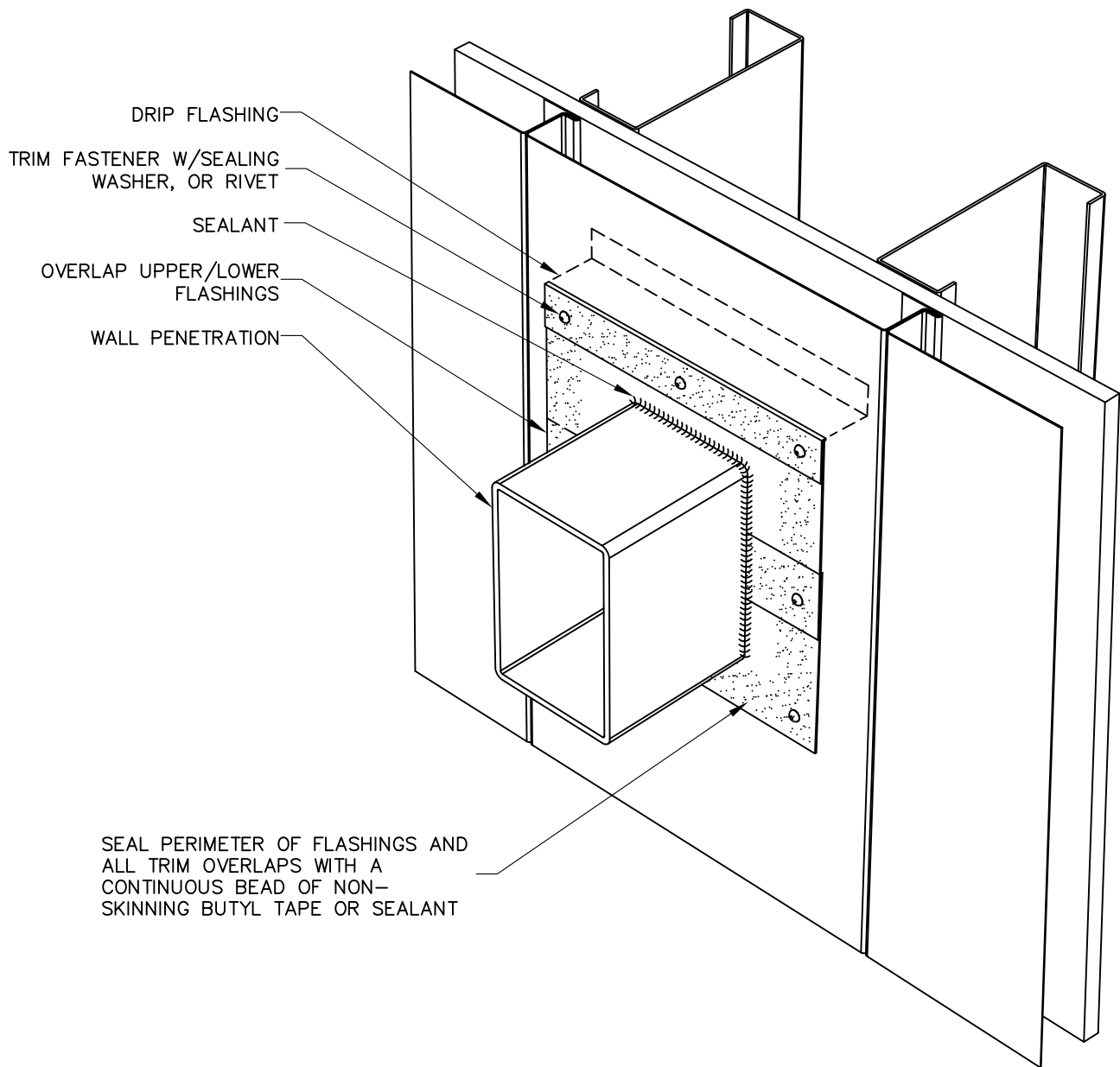


**PRESTIGE SERIES**  
VERTICAL INSTALL.

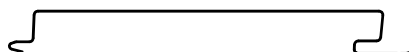


**DOOR / WINDOW**  
(SILL)

**PSV-16**

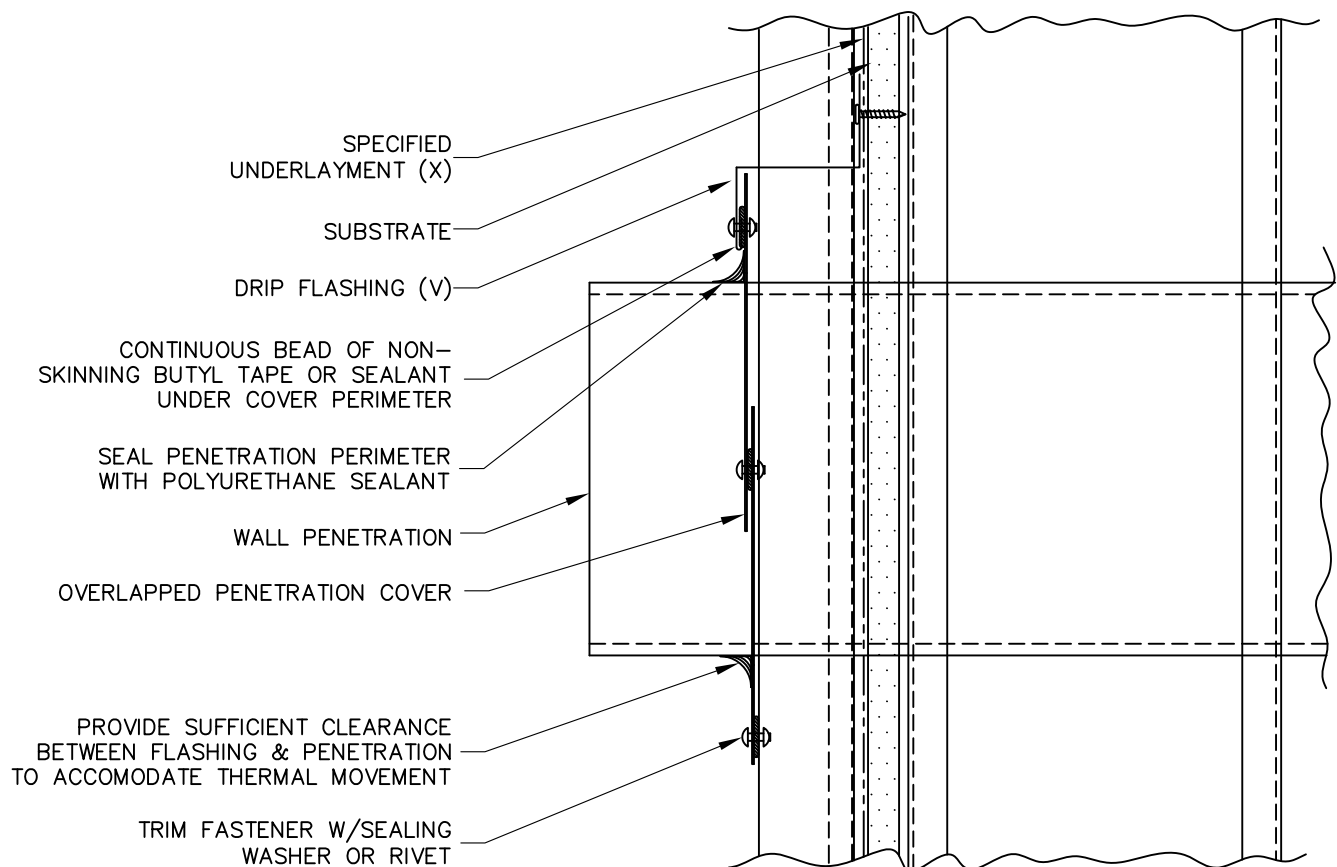


## PRESTIGE SERIES VERTICAL INSTALL.



WALL PENETRATION (3D)

PSV-17

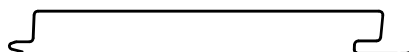


(X) - NOT BY AEP SPAN

(V) - DIMENSIONS VARY BASED ON PROJECT CONDITIONS

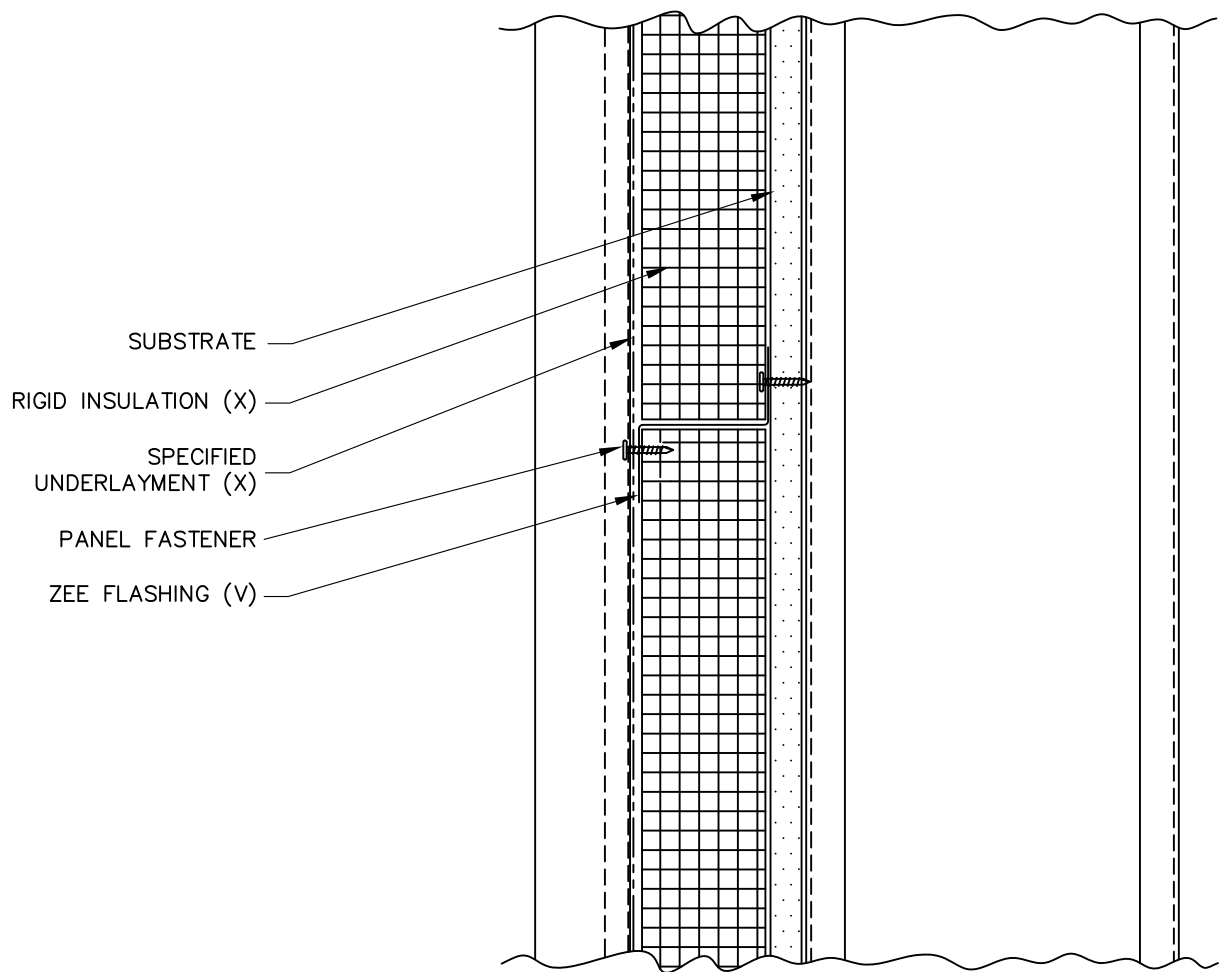


**PRESTIGE SERIES**  
VERTICAL INSTALL.



**WALL PENETRATION**

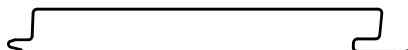
**PSV-18**



(X) - NOT BY AEP SPAN  
 (V) - DIMENSIONS AND GAGE VARY BASED ON PROJECT CONDITIONS



## PRESTIGE SERIES VERTICAL INSTALL.



RIGID INSULATION

PSV-19

MANUFACTURING FACILITY:

**Tacoma, Washington**

2141 Milwaukee Way  
Tacoma, WA 98421

**Fontana, California**

10905 Beech Avenue  
Fontana, CA 92337

CORPORATE HEADQUARTERS:

**ASC Profiles LLC**

2110 Enterprise Boulevard  
West Sacramento, CA 95691

CUSTOMER SERVICE:

**800-733-4955**

Visit us at:

**[www.aepspan.com](http://www.aepspan.com)**

